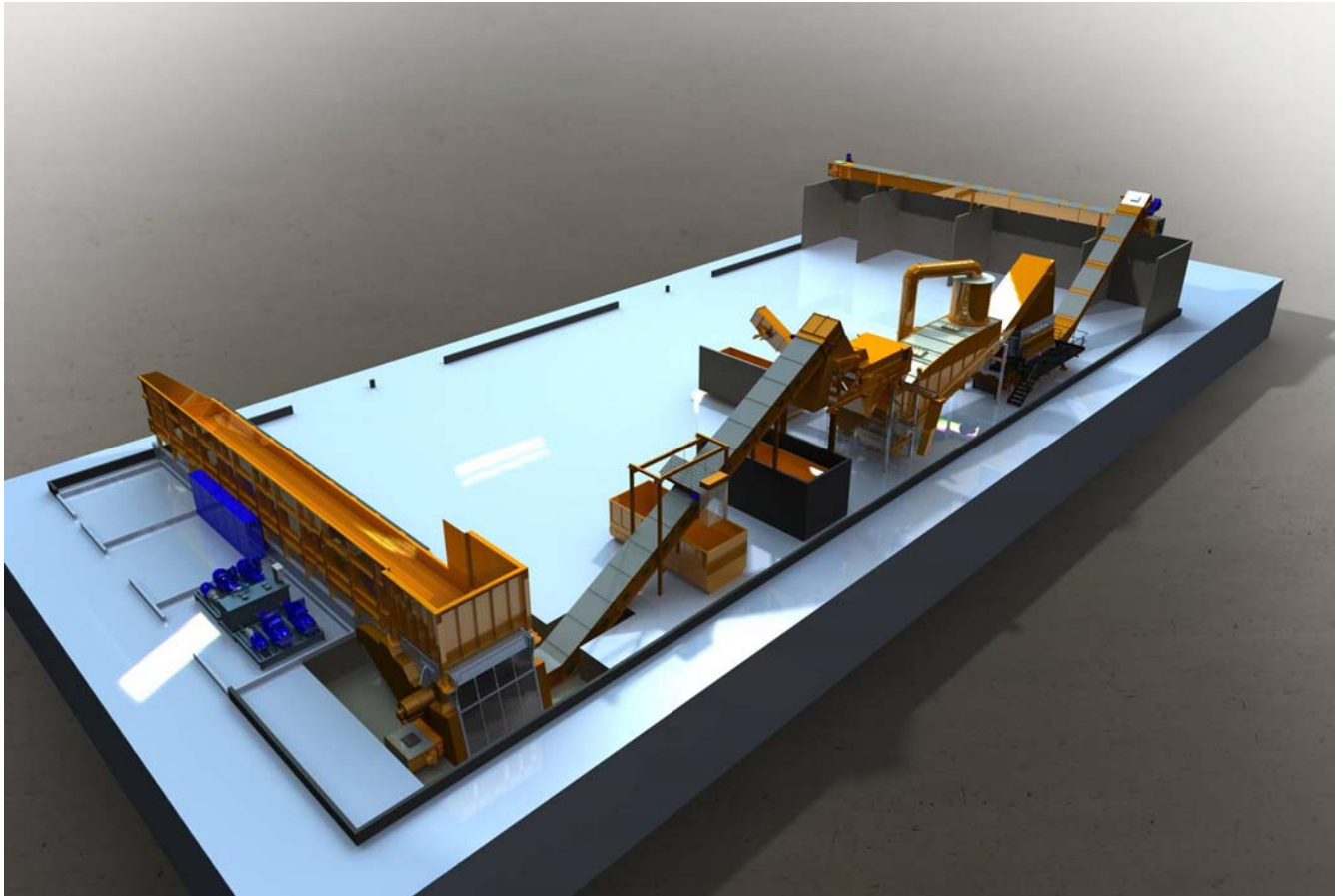


## WASTE PROCESSING PLANT FOR PREPARATION OF REFUSE DERIVED FUELS (RDF)



Installation: Poland

Equipment:	TYRANNOSAURUS® 9905	Capacity 16 – 40 t/h
	Step feeder	3.2 x 24 m
	MONSTER Fine Shredder 9905Z	Capacity 16 t/h (30 mm)
	Automatic screening & separation systems	
	Air-classifier TORNADO™	
	Conveyors	
	Electrification and automation	

Project description: A turn-key plant for processing commercial and industrial waste and special wastes such as mattresses and textiles, furniture, plastic and paper rolls, bigbags as well as baled materials.

The plant includes a two-stage crushing process. The product produced in the first stage has the particle size 80 % smaller than 100 x 100 mm. The second-stage product size is 30 mm. The end product is used as substitute fuel in cement kilns.

Start-up January 2008