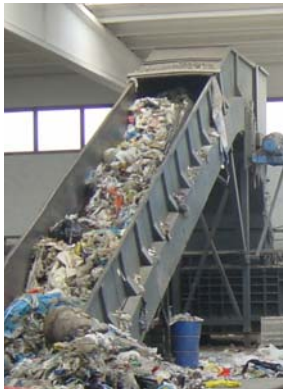


PREPARATION OF REFUSE DERIVED FUEL (RDF)



Installation: Ecoenergy S.R.L., Castiglione, Italy

Equipment: TYRANNOSAURUS® 9904

Capacity 20 – 30 t/h

Project description: The Tyrannosaurus plant, which is located at 15 km south of the Lake Garda, processes industrial and commercial waste as well as special wastes like carpets and bales. The produced particle size is 95 – 98 % smaller than 80 mm. The waste material is fed either by a grapple crane directly into the shredder or the waste is loaded on an apron conveyor that takes it up to the shredder. After shredding ferrous metals are separated by an over-belt magnet. When metals are ejected by the crusher, the discharge conveyor reverses. The shredded material falls out at the height of 5 meters. The product is ready for burning in various types of boilers.

Start-up November 2004